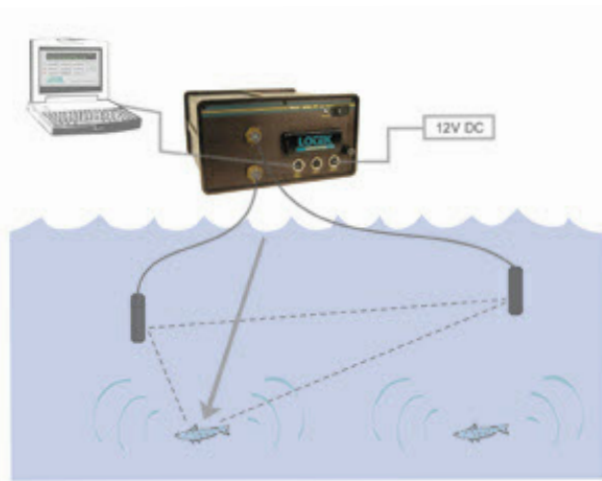


MAP600 Series

MAP Mobile Acoustic Real-Time Tracking Receivers



The MAP 600 Series receivers are designed specifically for simultaneous mobile tracking of multiple transmitters including sensors (temperature, pressure/depth, motion). It is configured for use with two hydrophone ports

for real time direction finding or 2D/3D positioning from a moving platform. The MAP600 Series of receivers are fully compatible with BioSonic Telemetry MAP (M Series) acoustic transmitters

Key Features

- Coding scheme allows transmitters to emit signals with high repetition rates (to one per second), making them easier to track manually
- Coding scheme allows for simultaneous detection of hundreds of co-located transmitters.
- Stereo hydrophones add the ability to detect the presence and the relative direction of fish in an instant.
- Mobile 2D/3D positioning of tagged animals
- with use of SYNAPS software
- Time of arrival direction finding supports use of basic omni directional hydrophones to detect signals over a wide angle, which eliminates the need for frequent boat maneuvering.
- All detections of fish ID, temperature, depth and motion status (requires sensor tag) appear on the screen immediately upon detection.



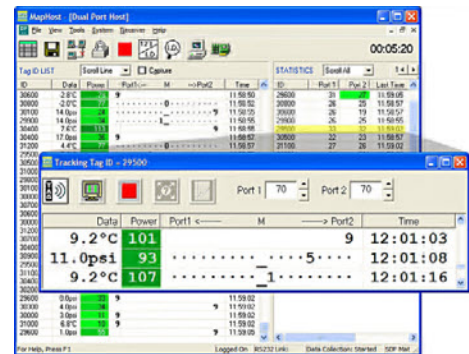
MAP600 Series

Specifications

No. Of Hydrophone Ports	2
Tag ID Capacity	Tens of Thousands on a single frequency band
Operating Frequency Bands	76 kHz & 200 kHz
Communication Interface	RS232
User Interface	PC-based host software provides control of receiver, status monitoring and real-time viewing of detection events. Real-time Virtual Control Panel (VCP) with angle of arrival display
Hydrophone Types Supported	76 kHz or 200kHz omnidirectional
Sensor Support	Temperature, pressure/depth, and/or motion sensing transmitter with ID
Memory (data storage)	Field exchangeable - 2Gbyte
Power Requirements	9W @ 12VDC as 2-port RT Mobile Receiver
Operating Temperature	-30° C to +50° C
Enclosure Dimensions	26.9 cm x 25.4 cm x 14cm
Enclosure Weight	3.3 kG
Audio Feedback	Integrated speaker plus headphone jack

MAPHost Software

The MAP 600 RT-A tracking system works in conjunction with PC host control software to display and store in real time both tag detections and sensor data, e.g. temperature, depth, and/or motion, while providing instantaneous indication of the fish's direction in relation to the hydrophone array. Audible voice or tone prompts announce detections to assist active tracking sessions.



SYNAPS Software

SYNAPS (Synthetic Aperture Positioning System) extends hydrophone array positioning to mobile surface vessel based tracking studies by combining detection records

collected from one or two moving hydrophones with GPS-referenced positions of the tow boat. 3D positioning is supported with the use of depth sensing transmitters.

